



Year 2 History
Aut 1
Topic: The Great Fire of London

Key Facts

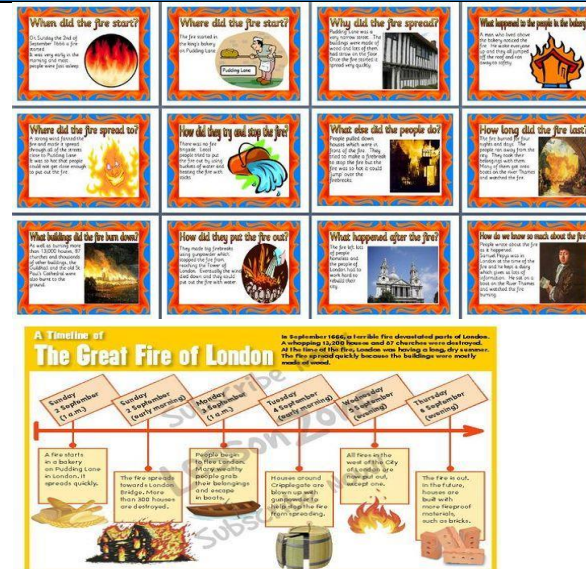
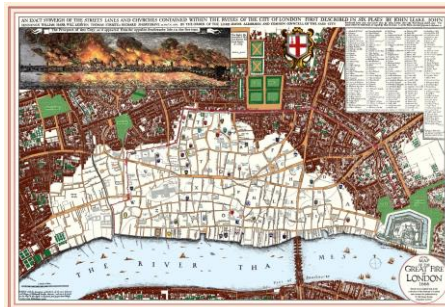
It started 2nd September 1666. Lasted for 4 whole days
What was London like in the past?
(people / houses / way of life)

Samuel Pepys' kept a diary
It started on Pudding Lane

Thomas Farriner's bakery oven may have caused the fire
The wind caused the fire to spread 1 1/2 miles
Wooden buildings were too close together

People went to the River Thames
The Navy put the fire out by blowing up buildings.
St. Pauls cathedral was destroyed.

Map/Timeline/Diagram



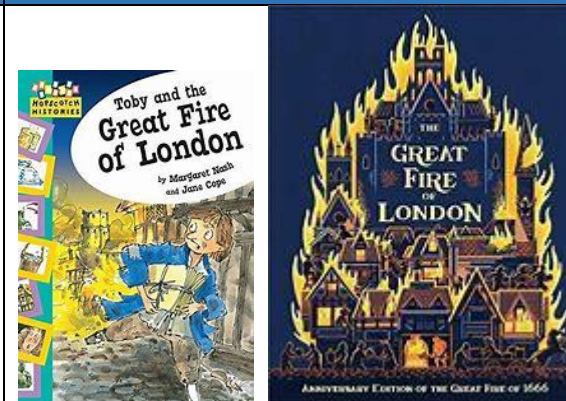
Key Learning:

- To use clues from objects and images to ask valid questions about The Great Fire.
- To understand where and when The Great Fire started.
- To know the events of The Great Fire.
- To sequence the events of The Great Fire
- To find out about Samuel Pepys and how we know what happened during The Great Fire.
- To find out why the fire spread so quickly.

Prior Learning:

- Know London is the capital of England.
- Using sources to find out.
- Recognising the distinction between past and present
- Timeline
- People in past Florence Nightingale, Beatrix Potter.

Books for support/ Enrichment Opportunities:



Visit by modern member of Fire Service
[Game - The Great Fire of London](#)

Subject Specific Vocabulary	
Key word	Definition
Great Fire	Name of event
after, later, during	Time order words
cause	Reason it started
effect	Impact
Fire breaks	Open spaces
embers	Smouldering piece of wood
Scorched	partly burnt
gunpowder	Explosive used to blow up
lantern	Candle in a glass case
water squirt	Early hose
leather bucket	Bucket made from animal skin
Fire hook	pole used to pull thatch off roof
Diary	account written at the time
Source	Artefact/account from the time
Pudding Lane	place where it began
Events	Things that happened
Eyewitness	person who was there
Samuel Pepys	Famous diarist
Thomas Farriner	Baker
King Charles II	Monarch